

**JAMES (Jimi) LEGETTE**  
Certified Arborist, ISA  
Registered Consulting Arborist, ASCA  
President, Chief Arborist  
Lauderdale Tree Service, Inc.  
954-583-1888  
www.lauderdaletreeservice.com  
4320 S.W. 74<sup>th</sup> Avenue • Davie, Florida 33314

September 21, 2023

Pompano Retail Center  
4791 N. Federal Highway  
Pompano Beach, FL 33060  
c/o: Juan Justiniano, Principal  
Justin Architects, P.A.  
2400 E. Commercial Boulevard, Suite 201  
Fort Lauderdale, Florida 33308  
Phone: (954) 771-2724 Ext. 106  
Email: [jjustiniano@justinarc.com](mailto:jjustiniano@justinarc.com)  
cc: Chang Du, RLA, LEEDAP, ASLA  
Duland Design  
811 E. Las Olas Blvd., Suite 4  
Fort Lauderdale, FL 33301  
Phone: (954) 494-9367  
Email: [cdu@dulanddesign.com](mailto:cdu@dulanddesign.com)

TREE SURVEY

This document will identify all principle trees and palms on subject property to include species (common and botanical names), showing location, catalogued numerically, and include size, condition (shown as a percentage), and appraised value per the City of Pompano Beach specifications. Disposition is indicated as remain, remove, or relocate. Please reference site plan attached. Additional trees #2A, #11A, #16, #17, #18 and #19 were not on included on original site plan, therefore locations are approximate and not to scale. Tree protection barriers may be required, see City of Pompano Beach website for details. This is not a hazard tree report.

1. Sabal palm (*Sabal palmetto*), 10' CT. fair condition, 50%, remain
  - Nearby overhead utility line conflict
2. Sabal palm (*Sabal palmetto*), 11' CT. fair condition, 50%, remain
  - Nearby overhead utility line conflict
- 2A. Sabal palm (*Sabal palmetto*), 5' CT, fair condition, 50%, remain
  - Nearby overhead utility line conflict
3. Calophyllum tree (*Calophyllum inophyllum*), 17" DBH, poor condition, 40%, remove
  - Repeated overhead utility line clearance has resulted in a disfigured canopy.
  - Off-balance canopy heavy to the south
4. Green Buttonwood tree (*Conocarpus erectus*), 12" DBH, poor condition, 20%, remain
  - Major areas of decay in lower trunk area
  - Tree appears to have been mechanically damaged resulting in a mutilated canopy.
  - Nearby overhead utility line conflict



DRC

PZ23-12000049

02/21/2024

5. Sabal palm (*Sabal palmetto*), 6' CT. fair condition, 50%, remain
6. Sabal palm (*Sabal palmetto*), 10' CT. fair condition, 50%, remain
  - Nearby overhead utility line conflict
7. Sabal palm (*Sabal palmetto*), 14' CT. fair condition, 50%, remain
  - Nearby overhead utility line conflict to the east
8. Live Oak tree (*Quercus virginiana*), 21" DBH, poor/fair condition, 45%, remain
  - This tree has a limited growing area.
  - Lower scaffolding structure consists of two codominant leaders conjoined by a "V" crotch with included bark.
  - Suggest canopy pruning to improve structure
9. Sabal palm (*Sabal palmetto*), 14' CT., fair condition, 50%, remain
10. Live Oak tree (*Quercus virginiana*), 19" DBH, fair condition, 50%, remain
  - Suggest canopy pruning to improve structure
11. Strangler Fig tree (*Ficus aurea*), 72" DBH, fair condition, 50%, remain
  - Suggest canopy pruning to improve structure
  - Suggest expanding growing area to accommodate critical root zone
- 11A. Sabal palm (*Sabal palmetto*), 20' CT, poor/fair condition, 45%, remain
  - This palm trunk is engulfed with Strangler Fig tree roots.
12. Mahogany tree with two trunks (*Mahogani Swietenia*), total 5" DBH, poor condition, 20%, remove
  - This tree provides minimal to no contribution to site.
13. Sabal palm (*Sabal palmetto*), 9' CT. fair condition, 50%, remain
14. Live Oak tree (*Quercus virginiana*), 19" DBH, poor condition, 40%, remain
  - Lower scaffolding consist of two codominant trunks, the eastern trunk has been cut off at about the 11' height, resulting in multiple juvenile adventitious growth.
  - West leader is of full size, resulting in an off-balance canopy heavy to the west.
  - Portions of canopy have been previously mutilated, resulting in a disfigured canopy
15. Live Oak tree (*Quercus virginiana*), 17" DBH, poor condition, 40%, remove
  - At about the 3' height on the trunk, there is evidence of an embedded foreign object girdling the total circumference of the trunk.
  - This tree is not a candidate for relocation.
  - Tree has been previously mutilated, resulting in a disfigured canopy.
16. Alexander palm (*Archontophoenix alexandrae*), 15' CT, poor condition, 35%, remain



**DRC**

PZ23-12000049

02/21/2024

17. Adonidia palm cluster of six units (*Adonidia merrillii*), average 11' CT, fair condition, 50%, remain
  - Palm has a curve in upper mid-trunk area resulting in a lean to the south over roof of structure.
18. Adonidia palm (*Adonidia merrillii*), 19' CT, poor condition, 35%, remain
19. Queen palm (*Syagrus romanzoffiana*), 18' CT, poor/fair condition, 45%, remain

Respectfully submitted,



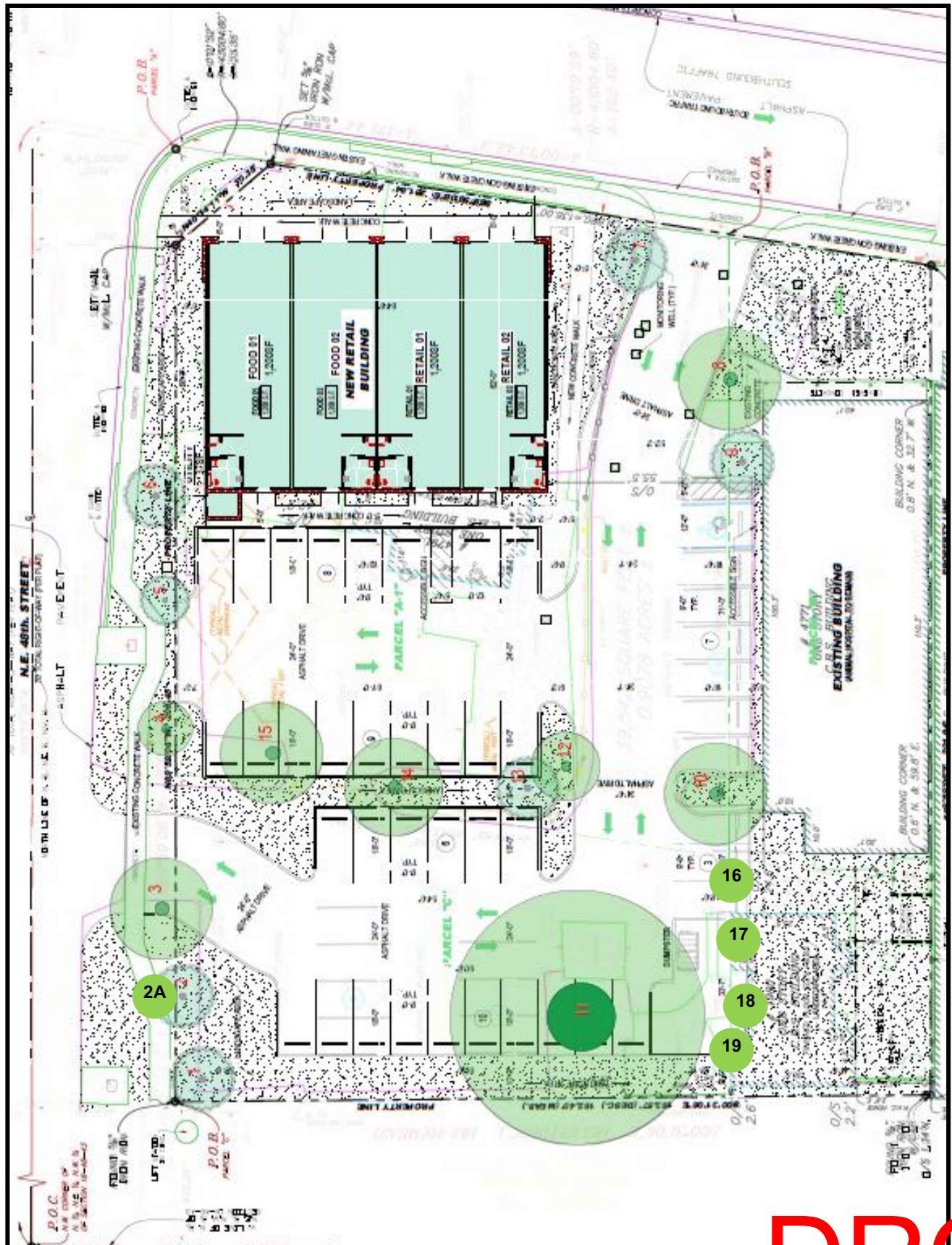
James (Jimi) LeGette  
Certified Arborist, ISA #SO-0502  
Registered Consulting Arborist, ASCA #617



**DRC**

PZ23-12000049

02/21/2024



**DRC**

PZ23-12000049  
02/21/2024